

Design and performance of the first BICEP Array receiver

A. Schillaci¹ · P. A. R. Ade² · Z. Ahmed^{3,4} ·
M. Amiri⁵ · D. Barkats⁶ · R. Basu Thakur¹ ·
C. A. Bischoff⁷ · J. J. Bock^{1,8} · H. Boenish⁶ ·
E. Bullock⁹ · V. Buza⁶ · J. Cheshire⁹ ·
J. Connors⁶ · J. Cornelison⁶ · M. Crumrine⁹ ·
A. Cukierman⁴ · M. Dierickx⁶ · L. Duband¹⁰ ·
S. Fatigoni⁵ · J. P. Filippini^{11,12} · G. Hall⁹ ·
M. Halpern⁵ · S. Harrison⁶ · S. Henderson^{3,4} ·
S. R. Hildebrandt⁸ · G. C. Hilton¹³ ·
H. Hui¹ · K. D. Irwin^{3,4} · J. Kang⁴ ·
K. S. Karkare^{6,14} · E. Karpel⁴ · S. Kefeli¹ ·
J. M. Kovac⁶ · C. L. Kuo^{3,4} · K. Lau⁹ ·
K. G. Megerian⁸ · L. Moncelsi¹ · T. Namikawa¹⁵ ·
H. T. Nguyen⁸ · R. O'Brient^{8,1} · S. Palladino⁷ ·
N. Precup⁹ · C. Pryke⁹ · B. Racine⁶ ·
C. D. Reintsema¹³ · S. Richter⁶ · B. L. Schmitt⁶ ·
R. Schwarz⁶ · C. D. Sheehy¹⁶ · A. Soliman¹ ·
T. St. Germaine⁶ · B. Steinbach¹ · R. V. Sudiwala² ·
K. L. Thompson^{3,4} · C. Tucker² · A. D. Turner⁸ ·
C. Umiltà⁷ · A. G. Vieregge¹⁴ · A. Wandui¹ ·
A. C. Weber⁸ · D. V. Wiebe⁵ · J. Willmert⁹ ·
W. L. K. Wu¹⁴ · E. Yang⁴ · K. W. Yoon⁴ ·
E. Young⁴ · C. Yu⁴ · C. Zhang¹

the date of receipt and acceptance should be inserted later

¹Department of Physics, California Institute of Technology, Pasadena, California 91125, USA

²School of Physics and Astronomy, Cardiff University, Cardiff, CF24 3AA, United Kingdom

³Kavli Institute for Particle Astrophysics and Cosmology, SLAC National Accelerator Laboratory, 2575 Sand Hill Rd, Menlo Park, California 94025, USA

⁴Department of Physics, Stanford University, Stanford, California 94305, USA

⁵Department of Physics and Astronomy, University of British Columbia, Vancouver, British Columbia, V6T 1Z1, Canada

⁶Harvard-Smithsonian Center for Astrophysics, Cambridge, Massachusetts 02138, USA

⁷Department of Physics, University of Cincinnati, Cincinnati, Ohio 45221, USA

⁸Jet Propulsion Laboratory, Pasadena, California 91109, USA

⁹Minnesota Institute for Astrophysics, University of Minnesota, Minneapolis, 55455, USA

¹⁰Service des Basses Températures, Commissariat à l'Energie Atomique, 38054 Grenoble, France

¹¹Department of Physics, University of Illinois at Urbana-Champaign, Urbana, Illinois 61801, USA

¹²Department of Astronomy, University of Illinois at Urbana-Champaign, Urbana, Illinois 61801, USA

¹³National Institute of Standards and Technology, Boulder, Colorado 80305, USA

¹⁴Kavli Institute for Cosmological Physics, University of Chicago, Chicago, IL 60637, USA

¹⁵Department of Applied Mathematics and Theoretical Physics, University of Cambridge, Wilberforce Road, Cambridge CB3 0WA, UK

¹⁶Physics Department, Brookhaven National Laboratory, Upton, NY 11973

E-mail: alex78@caltech.edu

Abstract Branches of cosmic inflationary models, such as slow-roll inflation, predict a background of primordial gravitational waves that imprints a unique odd-parity “B-mode” pattern in the Cosmic Microwave Background (CMB) at amplitudes that are within experimental reach. The BICEP/Keck (BK) experiment targets this primordial signature, the amplitude of which is parameterized by the tensor-to-scalar ratio r , by observing the polarized microwave sky through the exceptionally clean and stable atmosphere at the South Pole. B-mode measurements require an instrument with exquisite sensitivity, tight control of systematics, and wide frequency coverage to disentangle the primordial signal from the Galactic foregrounds.

BICEP Array represents the most recent stage of the BK program, and comprises four BICEP3-class receivers observing at 30/40, 95, 150 and 220/270 GHz. The 30/40 GHz receiver will be deployed at the South Pole during the 2019/2020 austral summer. After 3 full years of observations with 30,000+ detectors, BICEP Array will measure primordial gravitational waves to a precision $\sigma(r)$ between 0.002 and 0.004, depending on foreground complexity and the degree of lensing removal. In this paper we give an overview of the instrument, highlighting the design features in terms of cryogenics, magnetic shielding, detectors and readout architecture as well as reporting on the integration and tests that are ongoing with the first receiver at 30/40 GHz.

Keywords Cosmology, B-Mode polarization, Inflation, CMB, BICEP Array

1 Introduction

Measurements of the polarization of the Cosmic Microwave Background provide key information to further our understanding of the early universe. The Λ CDM model predicts an E -mode polarization pattern in the CMB at the level of a few μ K as well as B -mode polarization on arc-minute scales, arising from gravitational lensing of E -mode polarization by large-scale structure [1][2]. Inflationary gravitational waves source degree-scale B -mode polarization at an undetermined amplitude, parameterized by the tensor-scalar ratio r . Measurements of inflationary B -mode polarization constrain r and the energy scale of inflation. While classes of inflation models predict undetectably low levels of r , a detection of inflationary B -mode polarization would represent strong evidence for inflation. Producing better constraints on inflationary polarization now requires subtracting polarized Galactic dust and synchrotron foregrounds and removing gravitational lensing polarization, using next-generation instruments with higher sensitivity that observe in multiple frequencies.

In the last decade the Bicep/Keck Collaboration [3] has pushed down limits on r with a series of telescopes with increasing sensitivity, deployed at the South Pole Station. The BICEP/Keck instruments were designed specifically to control systematic errors on degree-scale measurements (multipoles $35 < l < 300$) using cryogenic wide-field refracting telescopes combined with arrays of planar antenna-coupled polarization-sensitive transition edge superconducting (TES) bolometers. To accurately measure polarized foregrounds, Keck Array carried out multi-frequency observations with 5 telescopes, accumulating years of data at 95, 150, 220 and at 270 GHz. Each Keck telescope was equipped with 4 detector tiles fabricated from 100 mm wafers, accommodating sub-arrays of 8×8 pixels (6×6 at 95 GHz), each pixel operating two TES bolometers sensing vertical and horizontal polarization, for a total of 512 detectors per receiver (288 at 95 GHz). Data accumulated through 2015, including the first 220 GHz data, yields the tightest inflationary constraints to date of $r_{0.05} < 0.07$ at 95% confidence with $\sigma(r) = 0.02$ [2]. Since 2015, Keck observations combined with data

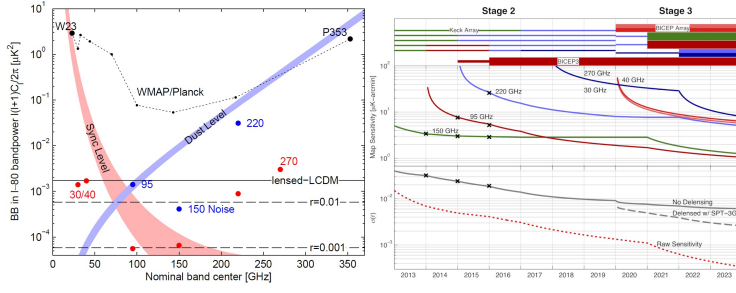


Fig. 1 *Left*: Expectation values and noise uncertainties for the B-mode power spectrum at degree angular scales in the BICEP/Keck field. The existing data already tightly constrains the SEDs of dust (blue band) and synchrotron (red band). Also shown are the levels of the lensing B-mode and potential inflationary signals (black lines). These can be compared to the noise uncertainties of WMAP/Planck and BICEP/Keck shown as points for the various observing frequencies. The blue points show the BK15 data set and the red ones show the projected noise levels for BICEP Array. *Right*: Projected sensitivity to r from 2013 to 2023. Top: Frequency distribution over the Stage 2 and Stage 3 receivers. Middle: Time evolution of the map depths at each frequency. Bottom: Sensitivity to r after marginalizing over seven foreground parameters, as well as the no foreground raw sensitivity (red). Crosses represent achieved sensitivities on published papers. The dashed gray line shows the expected improvement if we delens the field using SPT-3G data. ($A_L = 0.56$ in 2018 to 0.23 in 2023) (color figure online).

from the BICEP3 [4] telescope and its 2560 TES bolometers operating at 95 GHz, provide a significant increase in sensitivity. A delensing analysis, combining this dataset with South Pole Telescope high angular resolution data, will further improve constraints on inflationary polarization.

BICEP Array is the next stage (*Stage 3*) instrument for the BK Collaboration, replacing the Keck Array. We plan to deploy the first 30/40 GHz receiver during the 2019-2020 austral summer. Subsequent BICEP Array receivers will deploy in following seasons, replacing Keck receivers in the remaining 3 slots. After three years of observations with the full systems, the projected sensitivity reaches $\sigma(r) \leq 0.004$ (see Fig. 1). The final sensitivity depends on the degree of foreground complexity and the efficacy in removing the B-mode signal from gravitational lensing.

2 BICEP Array telescope design

BICEP Array [5][6] comprises 4 BICEP3-class telescopes with a total count of 30000+ photon-noise limited polarization-sensitive detectors. In order to fully characterize the Galactic dust and synchrotron polarized foregrounds, we have chosen the following frequencies: 30/40, 95, 150 and 220/270 GHz. Based on previous on-sky performance, the expected sensitivities for the 4 receivers are shown in table 1.

The 30/40 GHz receiver (see Fig. 2) uses a Cryomech PT415 pulse tube coupled with a He4/He3/He3 sorption fridge to cool the focal plane down to 250 mK. Each focal plane will be populated with 12 detector modules (see Fig. 3) connected to the readout electronics using superconducting Nb-Ti cryogenic cables carefully heat-sunk at the different temperature stages in order to minimize the conducted heat load. The cryogenic telescope is a $f/1.55$ refractor with a 550 mm clear aperture that uses two alumina lenses¹ to achieve an illuminated

¹ The 1st receiver will be deployed with HDPE lenses due to acceptable absorption loss at 30/40 GHz.

Receiver observ- ing band (GHz)	Number of De- tectors	Single Detector NET ($\mu K_{CMB}\sqrt{s}$)	Beam FWHM (arcmin)	Survey Weight per Year ($\mu K_{CMB}^{-2}yr^{-1}$)
Keck Array				
95	288	288	43	24,000
150	512	313	30	30,000
220	512	837	21	2,000
270	512	1,310	17	800
BICEP3				
95	2,560	288	24	213,000
BICEP Array				
/30	192	260	76	19,500
\40	300	318	57	20,500
95	4,056	288	24	337,400
150	8,664	313	15	509,000
/220	8,112	837	11	32,000
\270	13,068	1,310	9	21,000

Table 1 Receiver parameters as used in sensitivity projections. Boldface numbers are actual/achieved quantities for existing receivers on the sky. The remaining values in the survey weight column are scaled from achieved survey weights using only the ratio of the number of detectors, plus, if necessary to change frequency, the ratio of nominal NET values squared.

475 mm wide flat focal plane. An anti-reflection coating is applied on both lens surfaces to minimize in-band reflections. The optical filtering follows the successful BICEP3 scheme. Starting from the 300 K HDPE window, we use a 12-layer stacked HD30 Zotefoam filter (each layer 1/8" thick with 1/10" spacers) to block thermal radiation from 300 K. Absorptive filters at 50 K and 4 K lower the radiative heat load on the sub-K stages, the former made of alumina and the latter made of Nylon. Finally a low-pass metal-mesh filter at 300 mK defines the upper edge of the band.

The first 3 receivers will be equipped with state-of-the-art dual-polarization antenna-coupled TES arrays, fabricated on 150 mm diameter silicon wafers. The detector arrays are based on planar in-phase combined slot antennas that provide a high pixel packing density over feedhorns, given a chosen edge taper. The readout architecture is based on Time-Domain Multiplexing (TDM) with two stages of SQUIDs driven using a Multi-Channel Electronics (MCE) system that controls SQUID addressing and digitizes the detector signals. As SQUIDs and TES detectors must be carefully shielded from sources of magnetic fields [7][8], including the Earth's field. We studied multiple configurations using COMSOL Multi-Physics software (see figure 4)[9]. We selected an architecture with a cylindrical A4K high magnetic permeability shield at 50 K combined with a Niobium superconductive flared cup at 300 mK, that provides a shielding factor of 200 at the FPU. The TESs and the SQUIDs are then shielded inside the focal plane module, using a Niobium superconducting case and an interior layer of A4K to provide an additional shielding factor of about 500. We estimate the full system provides shielding a factor for the TESs and SQUIDs between 50,000 to 100,000.

We will perform direct measurements of the system to validate the magnetic field simulations by applying an external field that is modulated at a known frequency. We currently have installed two modules where the detector and squids are replaced with flux gate sensors capable of very sensitive magnetic field measurements.

The first 30/40 GHz receiver (BA1) will be populated with 6 modules in each frequency in a checker board arrangement. The design for the two frequencies is similar, with appro-

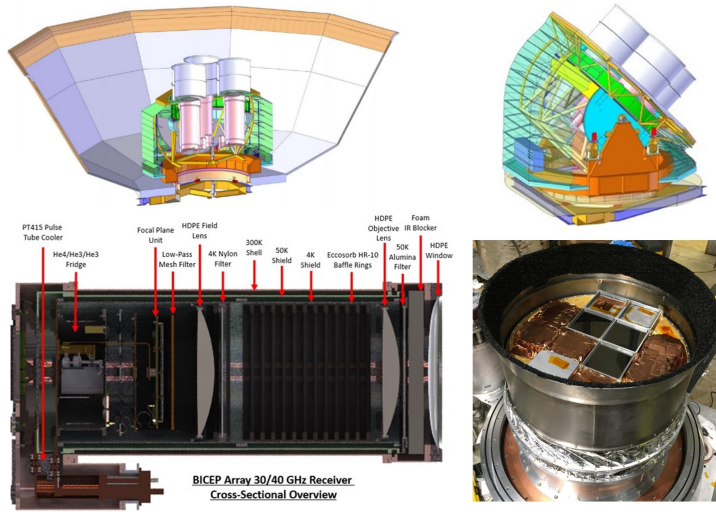


Fig. 2 *Top/Left*: BICEP Array mount in its ground shield. *Top/Right*: Detailed view of the mount with the 4 receivers in place. *Bottom/Left*: Receiver section view. *Bottom/Right*: Sub-Kelvin Insert of 30/40 GHz BICEP Array receiver, with the Niobium flared cup shield installed. At the center there are 3 optically active 40 GHz modules. We also installed a blanked (dark) 40 GHz module, visible at the bottom, and two module housings with flux gate sensors (one at the TES location and one at the SQUID location) for magnetic susceptibility measurements (color figure online).

prate dimensions of the antenna and module scaled accordingly to frequency. We designed the module frame wall with broad-band corrugations to minimize polarized beam mismatch on the edge pixels in both frequency bands [10].

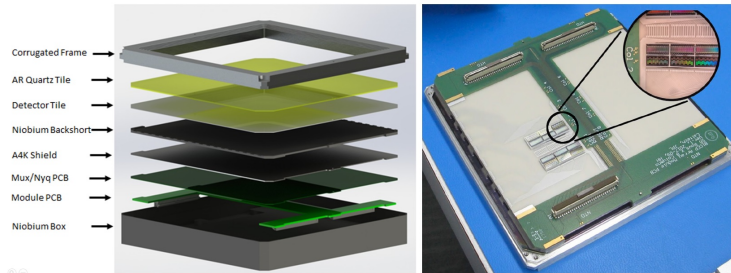


Fig. 3 *Left*: Design of a focal plane module that houses the detector wafer, anti-reflection wafer, backshort, SQUID readout, and integral magnetic shielding, shown in an exploded 3D rendering. *Right*: An open module showing SQUID chips mounted to a printed wiring board on the back of the detector backshort (color figure online).

As the last 220/270 GHz receiver (BA4) has over 20,000 detectors, we plan to use RF-multiplexing to reduce the complexity of the readout system. One possible implementation

is a microwave SQUID readout (μ Mux)[11] system that operates with our current TES detectors. Alternatively, Thermal Kinetic Inductance Detectors (TKID) offer on-wafer RF multiplexing to greatly simplify wafer hybridization, and are currently being developed and tested within the collaboration.

We have developed a new multi-receiver telescope mount to replace the Keck mount at South Pole Station. Following the Keck and BICEP3 designs, the mount provides bore-sight rotation about the optical axis, in addition to rotation in Azimuth and Elevation. We plan to install the BA1 cryostat plus 3 Keck receivers in the available 4 mount slots in the coming 2019/2020 austral summer. The observations will continue to focus on the deep BICEP/Keck sky patch so that the new low-frequency data can be combined with existing multi-frequency observations.

3 BICEP Array 30/40 GHz receiver performance

The 30/40 GHz BA1 cryostat was successfully integrated and tested and we achieved good cryogenic performance in spring 2019, including the full window and thermal filters. We cryogenically integrated a second receiver with a small array of focal plane detectors that is currently being testing with the mount.

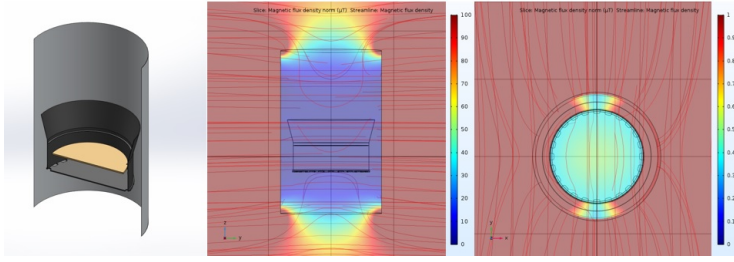


Fig. 4 *Left:* BICEP Array receiver magnetic shields showing the A4K cylinder (light grey), the superconducting Niobium flared cup (dark grey) and the FPU plate (gold). *Center:* Comsol Simulation of the Transverse residual field (vertical section, external field is $100\mu\text{T}$). *Right* Comsol Simulation of the Transverse residual field (horizontal section at the FPU, external field is $100\mu\text{T}$). Color bar units are in μT . The modules provide an additional level of shielding at the focal plane (color figure online).

We are currently integrating and testing six 40 GHz detector modules and we are expecting the first 30 GHz unit soon. Each module is tested either in a separate cryostat or in the BA1 receiver. Each module undergoes electrical testing under dark conditions, and optical testing through the optics and window. In a dark run we measure the TES properties, thermal isolation, and noise performance. We carefully optimized the 30 and 40 GHz detectors for the expected optical loading. The 40 GHz detectors are performing near photon-limited sensitivity, with a NET of about $360\mu K_{\text{CMB}}/\sqrt{Hz}$ [12].

In a light run we measure end-to-end optical efficiency, spectral response, and antenna beam patterns [13][14]. The detectors use a high-background aluminum TES to facilitate lab measurements, avoiding an optical attenuator that can introduce polarized artifacts. In Fig 5 we show a typical beam map, optical efficiency histogram and spectral response. Tested

40 GHz modules show low residual beam ellipticity, an average end-to-end efficiency exceeding 30% and a band center (width) of 41.9 GHz (27%).

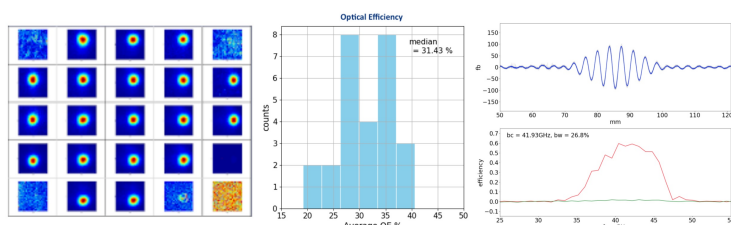


Fig. 5 Results from optical characterization of 40 GHz detectors. *Left:* Antenna beam maps over a module, shown in a single polarization. *Center:* A histogram of measured optical efficiency from 300 K and 77 K sources. These measurements are end-to-end and included losses in the thermal filters and window. *Right:* Interferogram and spectral response for a typical 40 GHz detector (color figure online).

Acknowledgements The BICEP/Keck project have been made possible through a series of grants from the National Science Foundation including 0742818, 0742592, 1044978, 1110087, 1145172, 1145143, 1145248, 1639040, 1638957, 1638978, 1638970, & 1726917 and by the Keck Foundation. The development of antenna-coupled detector technology was supported by the JPL Research and Technology Development Fund and NASA Grants 06-ARPA206-0040, 10-SAT10-0017, 12-SAT12-0031, 14-SAT14-0009 & 16-SAT16-0002. The development and testing of focal planes were supported by the Gordon and Betty Moore Foundation at Caltech. Readout electronics were supported by a Canada Foundation for Innovation grant to UBC. The computations in this paper were run on the Odyssey cluster supported by the FAS Science Division Research Computing Group at Harvard University. The analysis effort at Stanford and SLAC is partially supported by the U.S. DoE Office of Science. We thank the staff of the U.S. Antarctic Program and in particular the South Pole Station without whose help this research would not have been possible. Tireless administrative support was provided by Kathy Deniston, Sheri Stoll, Irene Coyle, Donna Hernandez, and Dana Volponi.

References

1. Planck Collaboration, *ASTRON ASTROPHYS.* **594**, A24, (2016), DOI: 10.1051/0004-6361/201526926
2. U. Seljak, M. Zaldarriaga, *Phys. Rev. Lett.* **78**, 11, (1997), DOI: 10.1103/PhysRevLett.78.2054
3. Bicep/Keck Collaboration *Phys. Rev. Lett.* **121**, 22, (2018), DOI: 10.1103/PhysRevLett.121.221301
4. J.H. Kang, et al, *Proc. SPIE* **10708**, id. 107082N, (2018), DOI: 10.1117/12.2313854
5. H. Hui, et al, *Proc. SPIE* **10708**, id. 1070807, (2018), DOI: 10.1117/12.2311725
6. M. Crumrine, et al, *Proc. SPIE* **10708**, id. 107082D, (2018), DOI: 10.1117/12.2312829
7. E. Vavagiakis, et al, *J. Low Temp. Phys.* **193**, Issue 3-4, (2018), DOI: 10.1007/s10909-018-1920-5
8. J. R. Claycomb, et al, *REV. SCI. INSTRUM.* **70**, 4562, (1999), DOI: /10.1063/1.1150113
9. A. Bergen, et al, *REV. SCI. INSTRUM.* **87**, 105109, (2016), DOI: /10.1063/1.4962157
10. A. Soliman, et al, *Proc. SPIE* **10708**, id. 107082G, (2018), DOI: /10.1117/12.2312942
11. A. Cukierman, et al, *J. Low Temp. Phys.*, This Special Issue (2019)
12. C. Zhang, et al, *J. Low Temp. Phys.*, This Special Issue (2019)
13. T. St. Germaine , et al, *J. Low Temp. Phys.*, This Special Issue (2019)
14. A. Soliman, et al, *J. Low Temp. Phys.*, This Special Issue (2019)